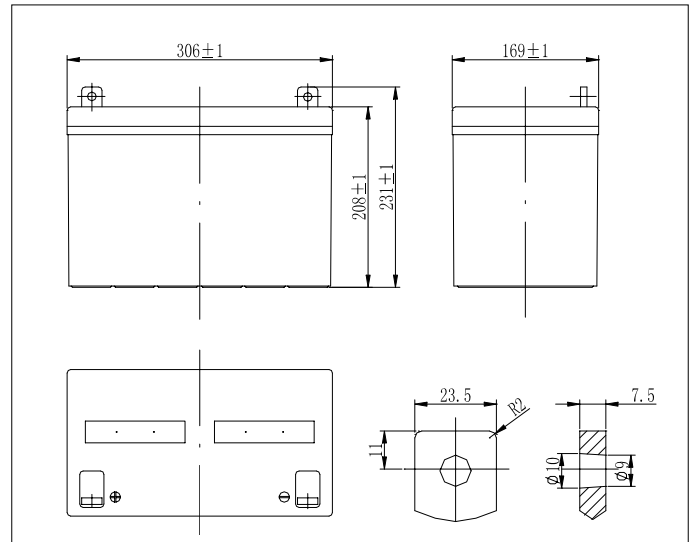


2M-1290G 12V-90AH RECHARGEABLE SEALED LEAD-ACID BATTERY

Specifications

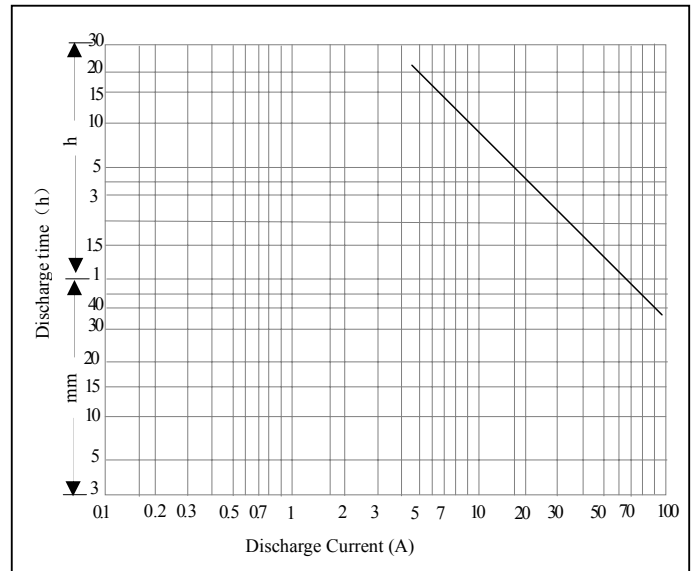
Nominal voltage		12V
Rated Capacity (20 hour rate)		90Ah
Dimensions	Height	9.09inches(231mm)
	Length	12.05inches(306mm)
	Width	6.65inches(169mm)
Weight		Approx. 66.10Lbs(30000g)



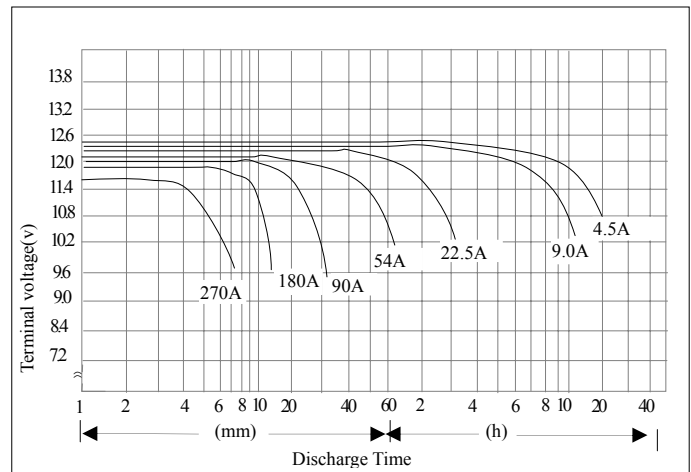
Characteristics

Capacity	20 hour rate	92.0Ah
	10 hour rate	82.8Ah
	5 hour rate	78.2Ah
	1 hour rate	57.0Ah
77°F(25°C)		
Internal Resistance	Full charged Battery 77°F(25°C)	11.5mΩ
Capacity affected by Temperature (20 hour rate)	113°F(45°C)	102%
	77°F(25°C)	100%
	32°F(0°C)	85%
	5°F(-15°C)	65%
Self-Discharge	Capacity after 3 month storage	92%
	Capacity after 6 month storage	84%
	Capacity after 12 month storage	66%
77°F(25°C)		
Charge (Constant Voltage)	Cycle	Initial Charging Current less then 18A Voltage 14.5~14.9V/12V 77°F(25°C)
	Float	Voltage 13.5~13.8V/12V 77°F(25°C)

Discharge Current & Discharge Duration Time 77°F(25°C)

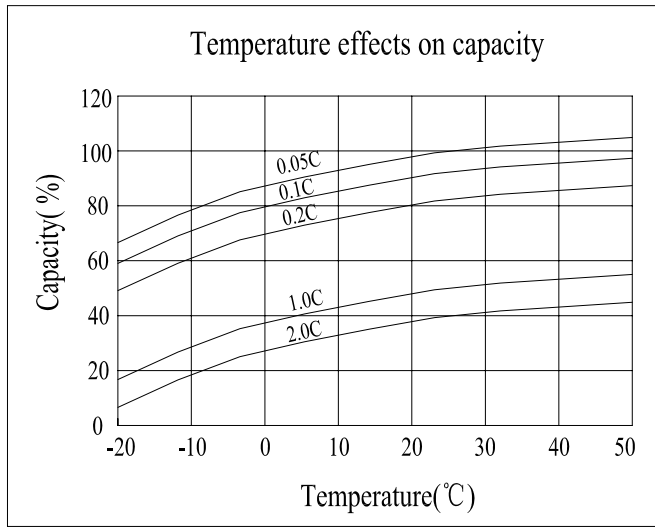


Discharge curves 77°F(25°C)*

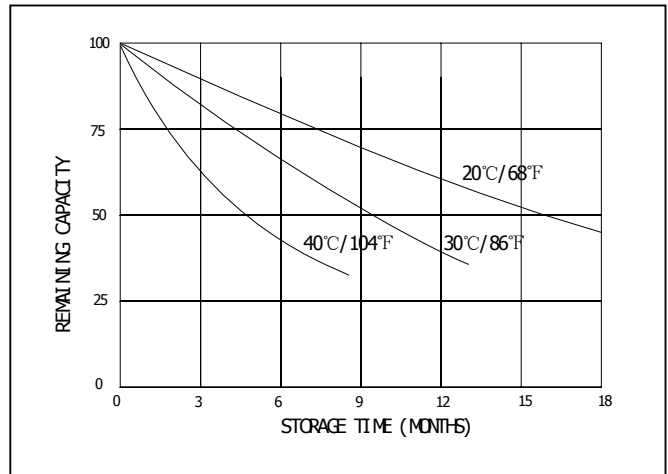


* The above data are average values and can be obtained within

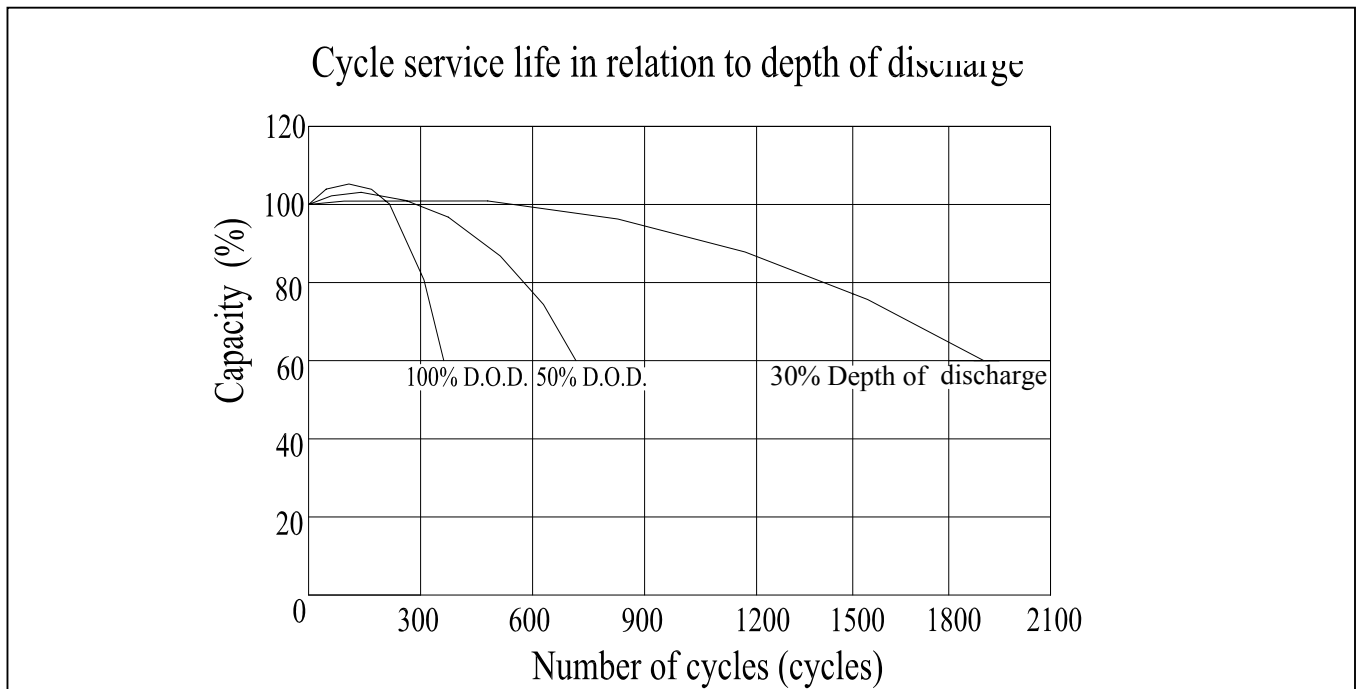
■ SELF-DISCHARGE CHARACTERISTICS



■ SELF-DISCHARGE CHARACTERISTICS



■ CYCLE SERVICE LIFE(25°C/77°F)



12V90-AH GEL Constant Power Discharge Data

Time F.V.	Autonomy in minutes										Autonomy in hours						
	3	5	10	15	20	25	30	35	40	45	1	2	3	5	8	10	20
1.60	731	488	349	277	230	198	176	160	146	133	108	65	47	32	21.6	16.9	9.1
1.65	714	482	344	272	227	195	173	158	145	131	107	65	47	31	21.4	16.7	9.0
1.70	691	464	337	266	223	191	169	153	144	128	106	63	46	31	21.0	16.4	9.0
1.75	653	442	326	254	215	185	164	149	140	125	104	62	45	30	20.3	16.1	9.0
1.80	608	405	306	230	205	176	158	142	132	119	97	59	43	29	19.8	15.8	9.0