

# 2M-1255G

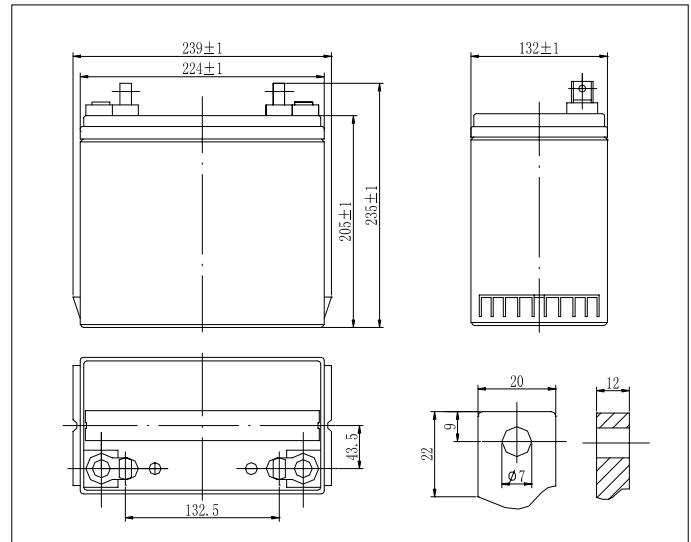
# 12V-55AH GEL

# RECHARGEABLE SEALED LEAD-ACID BATTERY



### Specifications

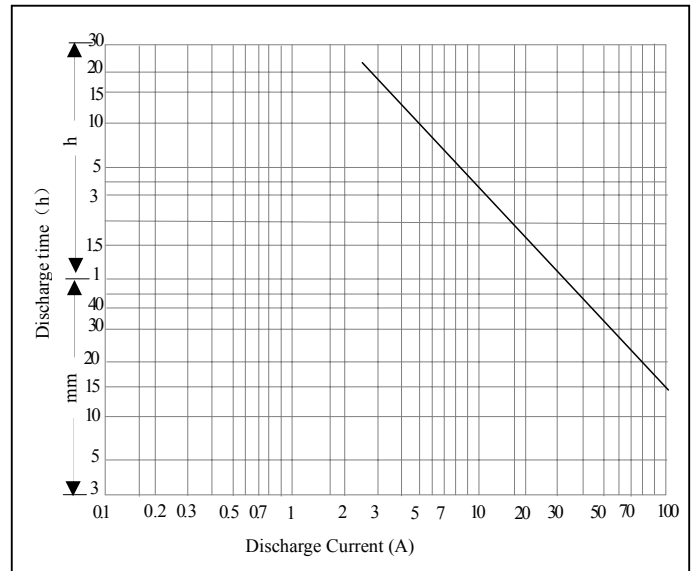
Nominal voltage		12V
Rated Capacity (20 hour rate)		55Ah
Dimensions	Height	9.25inches(235mm)
	Length	9.41inches(239mm)
	Width	5.20inches(132mm)
Weight		Approx. 39.83Lbs(18000g)



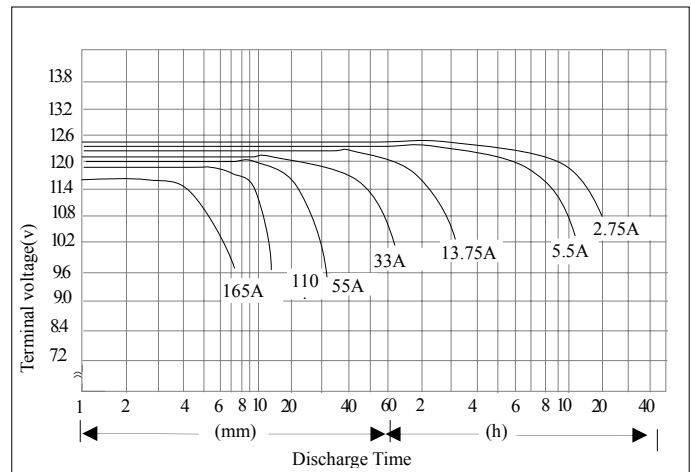
### Characteristics

Capacity	20 hour rate	55.6Ah
	10 hour rate	50.0Ah
	5 hour rate	47.2Ah
	1 hour rate	34.5Ah
	77°F(25°C)	
Internal Resistance	Full charged Battery 77°F(25°C)	11.5mΩ
Capacity affected by Temperature (20 hour rate)	113°F(45°C)	102%
	77°F(25°C)	100%
	32°F(0°C)	85%
	5°F(-15°C)	65%
Self-Discharge	Capacity after 3 month storage	94%
	Capacity after 6 month storage	88%
	Capacity after 12 month storage	66%
	77°F(25°C)	
Charge (Constant Voltage)	Cycle	Initial Charging Current less then 11A Voltage 14.5~14.9V/12V 77°F(25°C)
	Float	Voltage 13.5~13.8V/12V 77°F(25°C)

### Discharge Current & Discharge Duration Time 77°F(25°C)

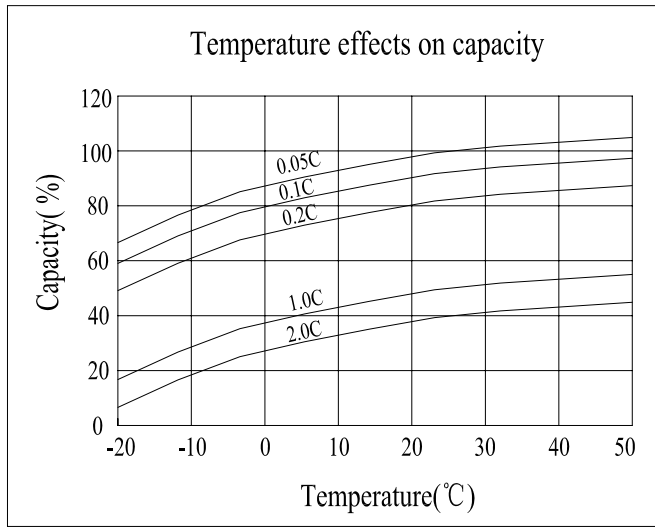


### Discharge curves 77°F(25°C)\*

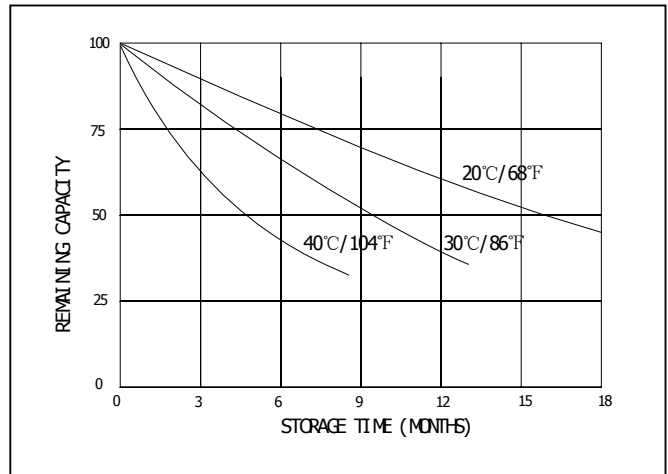


\* The above data are average values, and can be obtained within

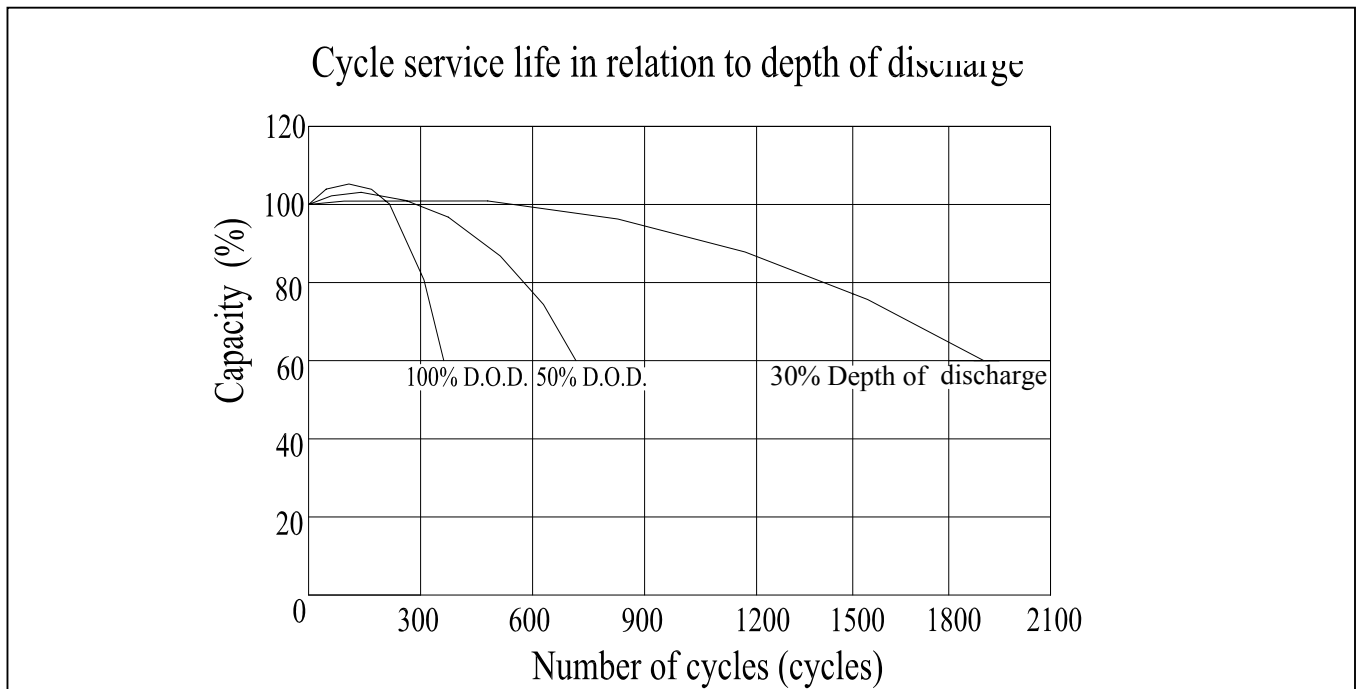
■ SELF-DISCHARGE CHARACTERISTICS



■ SELF-DISCHARGE CHARACTERISTICS



■ CYCLE SERVICE LIFE(25°C/77°F)



**2M-1255G 12V-55AH GEL-- Constant Power Discharge Data**

Time F.V.	Autonomy in minutes										Autonomy in hours						
	3	5	10	15	20	25	30	35	40	45	1	2	3	5	8	10	20
1.60	447	298	213	169	140	121	107	98	89	81	66	40	29	19.3	13.2	10.3	5.6
1.65	436	295	210	166	139	119	106	97	89	80	65	40	29	19.0	13.1	10.2	5.5
1.70	422	284	206	163	136	117	103	94	88	78	65	39	28	18.8	12.8	10.0	5.5
1.75	399	270	199	155	131	113	100	91	86	76	63	38	27	18.4	12.4	9.8	5.5
1.80	371	248	187	140	125	108	96	87	81	73	59	36	26	17.9	12.1	9.6	5.5