

2M-1233G

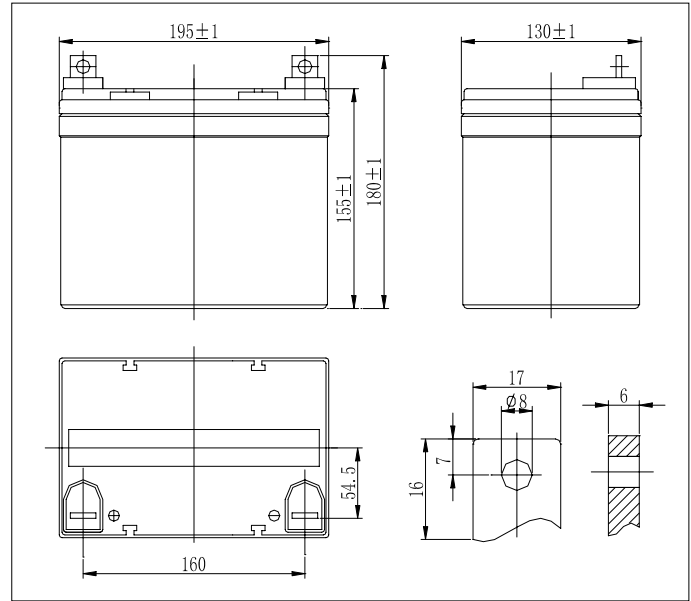
12V-33AH GEL

RECHARGEABLE SEALED LEAD-ACID BATTERY

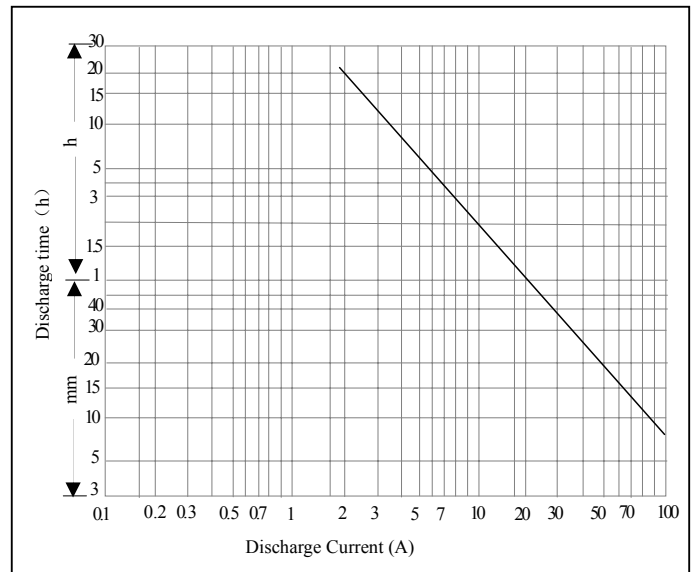


Specifications

Nominal voltage		12V
Rated Capacity (20 hour rate)		33Ah
Dimensions	Height	7.09inches(180mm)
	Length	7.68inches(195mm)
	Width	5.12inches(130mm)
Weight		Approx. 23.5Lbs(10200g)



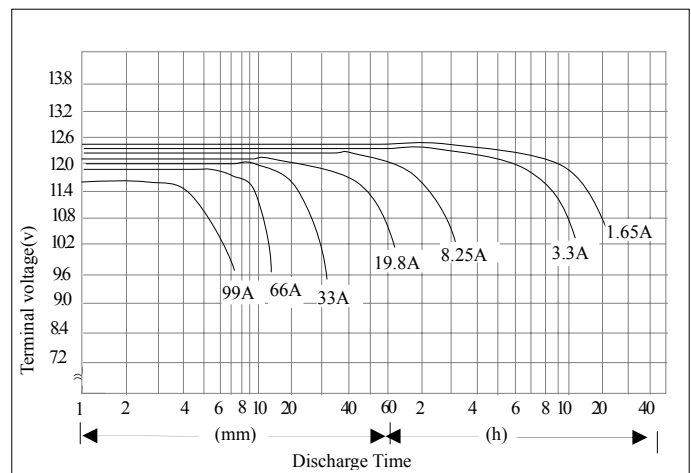
■ Discharge Current & Discharge Duration Time 77°F(25°C)



■ Characteristics

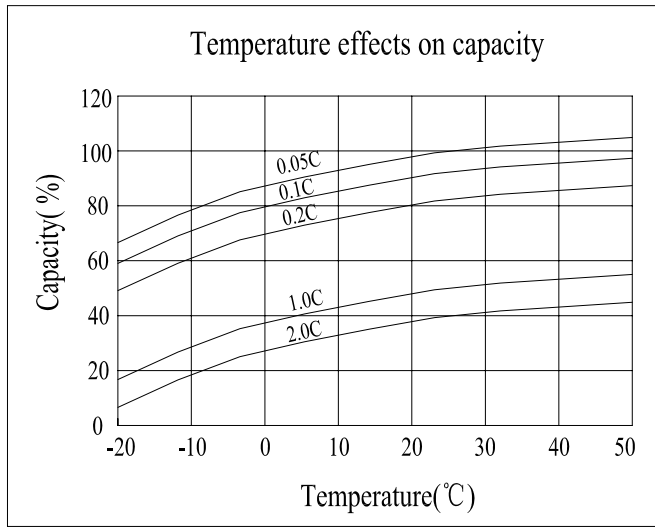
Capacity	20 hour rate	33.0Ah
	10 hour rate	29.7Ah
	5 hour rate	28.0Ah
	1 hour rate	19.8Ah
77°F(25°C)	Full charged Battery	11.5mΩ
Internal Resistance	113°F(45°C)	102%
	77°F(25°C)	100%
	32°F(0°C)	85%
	5°F(-15°C)	65%
Capacity affected by Temperature (20 hour rate)	Capacity after 3 month storage	94%
	Capacity after 6 month storage	88%
	Capacity after 12 month storage	66%
Self-Discharge 77°F(25°C)	Initial Charging Current less then 6.6A	
	Voltage 14.5~14.9V/12V 77°F(25°C)	
Charge (Constant Voltage)	Cycle	
	Float	Voltage 13.5~13.8V/12V 77°F(25°C)

■ Discharge curves 77°F(25°C)*

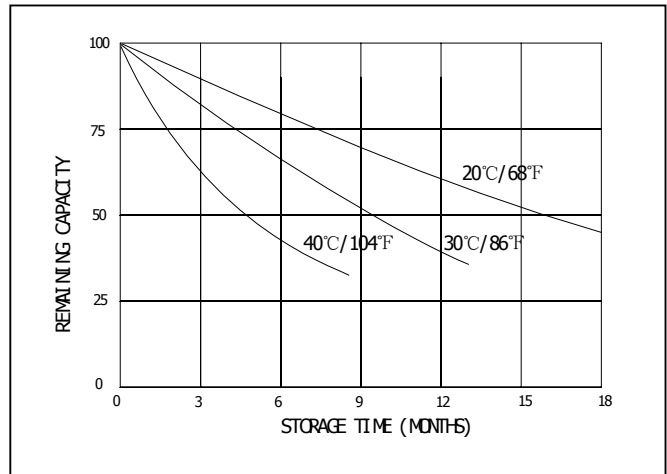


* The above data are average values and can be obtained within

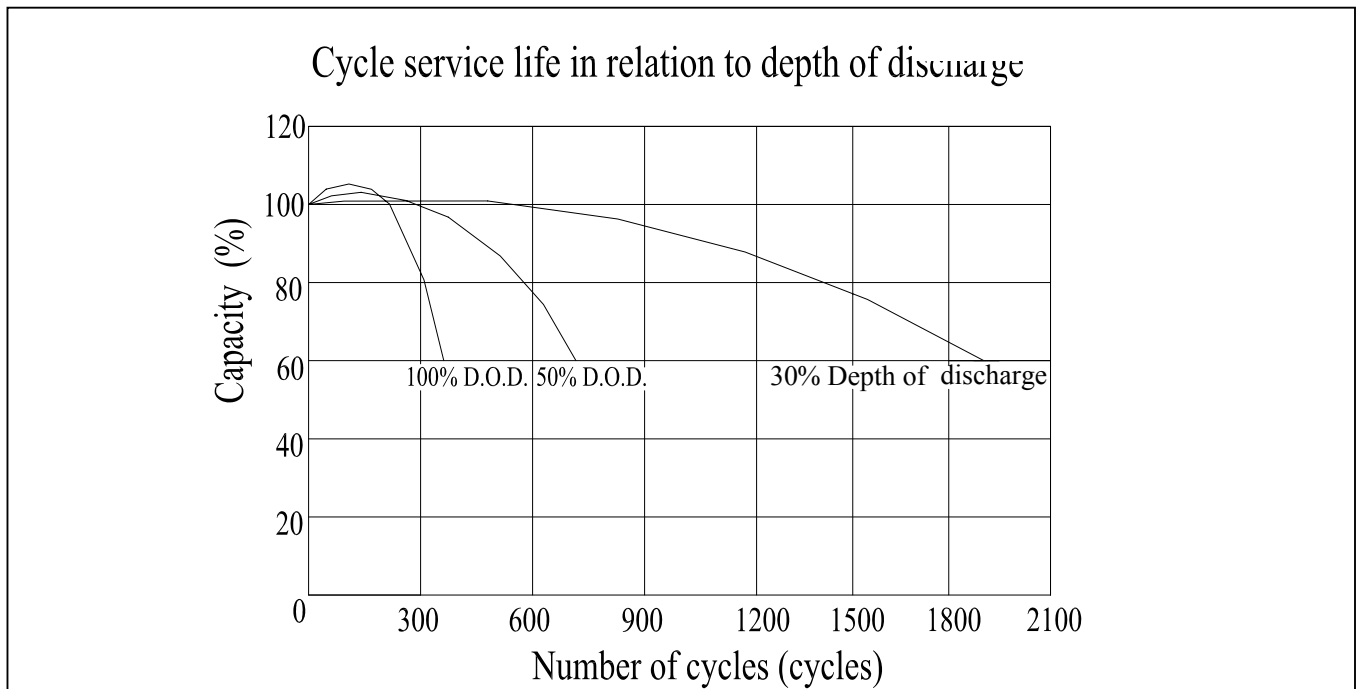
■ SELF-DISCHARGE CHARACTERISTICS



■ SELF-DISCHARGE CHARACTERISTICS



■ CYCLE SERVICE LIFE(25°C/77°F)



2M-1233G 12V-33AH GEL Constant Power Discharge Data

Time F.V.	Autonomy in minutes										Autonomy in hours						
	3	5	10	15	20	25	30	35	40	45	1	2	3	5	8	10	20
1.60	268	179	128	101	84	73	64	59	54	49	40	23.9	17.3	11.6	7.9	6.2	3.3
1.65	262	177	126	100	83	72	64	58	53	48	39	23.8	17.2	11.4	7.8	6.1	3.3
1.70	253	170	123	98	82	70	62	56	53	47	39	23.3	16.8	11.3	7.7	6.0	3.3
1.75	239	162	120	93	79	68	60	54	51	46	38	22.6	16.3	11.1	7.4	5.9	3.3
1.80	223	149	112	84	75	65	58	52	49	44	35	21.5	15.7	10.7	7.3	5.8	3.3