

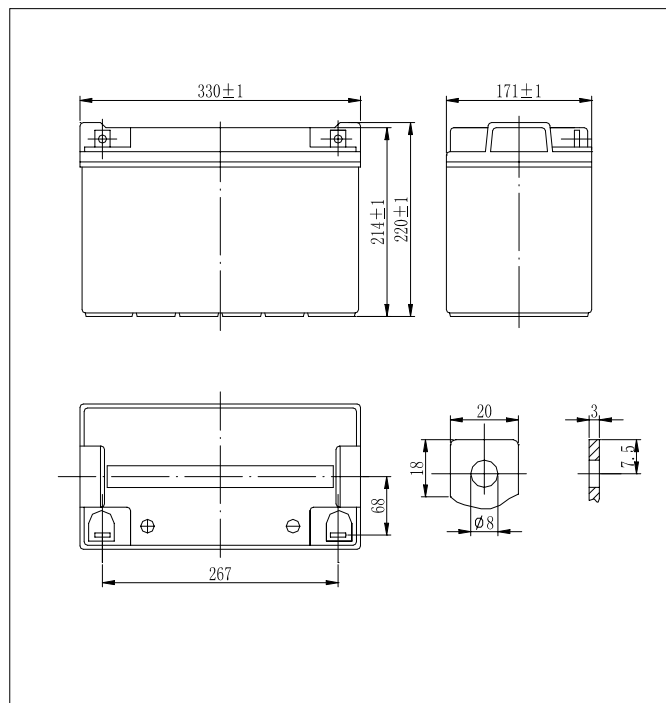
2M-12100G BATTERY

12V-100AH GEL

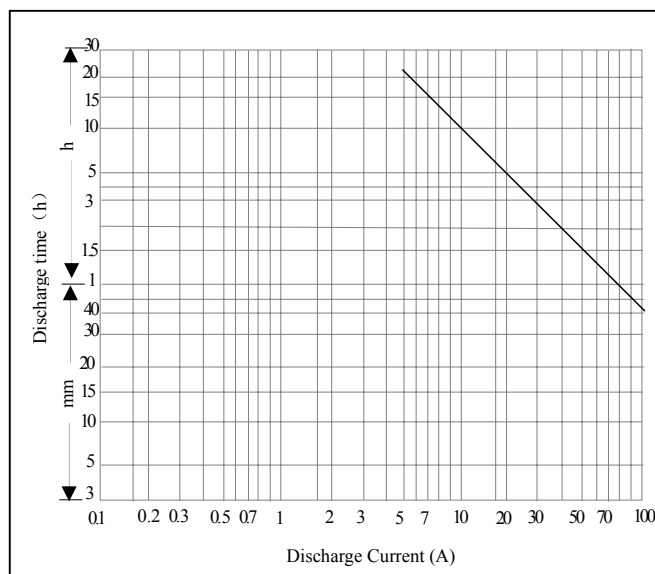
RECHARGEABLE SEALED LEAD-ACID

Specifications

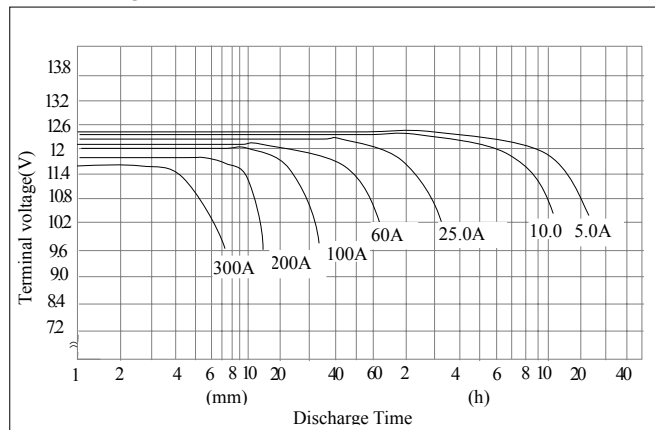
Nominal voltage		12V
Rated Capacity (20 hour rate)		100Ah
Dimensions	Total height	8.66inches(220mm)
	Height	8.43inches(214mm)
	Length	12.99inches(330mm)
	Width	6.73inches(171mm)
Weight		Approx. 70.50Lbs(32000g)



■ Discharge Current & Discharge Duration Time 77°F (25°C)



■ Discharge curves 77°F (25°C)



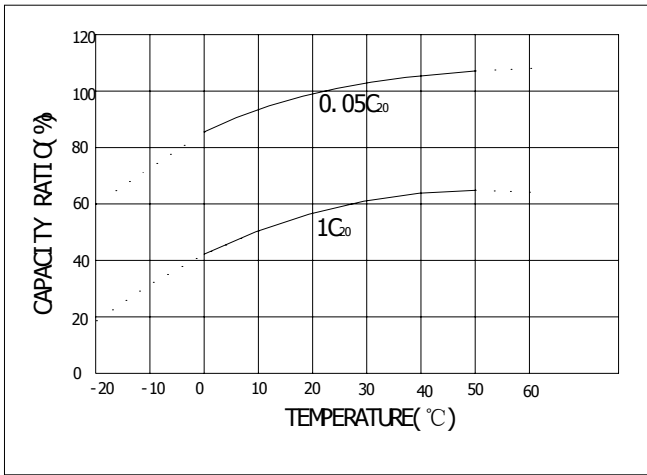
■ Characteristics

Capacity	20 hour rate	100Ah
	10 hour rate	91Ah
	5 hour rate	80Ah
	1 hour rate	73Ah
77°F(25°C)		
Internal Resistance	Full charged Battery 77°F(25°C)	5mΩ
Capacity affected by Temperature (20 hour rate)	104°F(40°C)	102%
	77°F(25°C)	100%
	32°F(0°C)	85%
	5°F(-15°C)	65%
Self-Discharge 77°F(25°C)	Capacity after 3 month storage	94%
	Capacity after 6 month storage	88%
	Capacity after 12 month storage	60%
Charge (Constant Voltage)	Cycle	Initial Charging Current less then 20A Voltage 14.5~14.9V/12V 77°F(25°C)
	Float	Voltage 13.5~13.8V/12V 77°F(25°C)

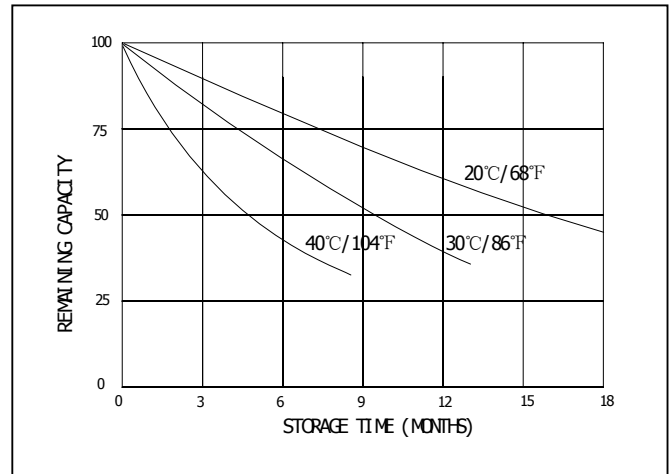
* The above data are average values, and can be obtained within

2M-12100G --12V-100AH GEL RECHARGEABLE SEALED LEAD-ACID BATTERY

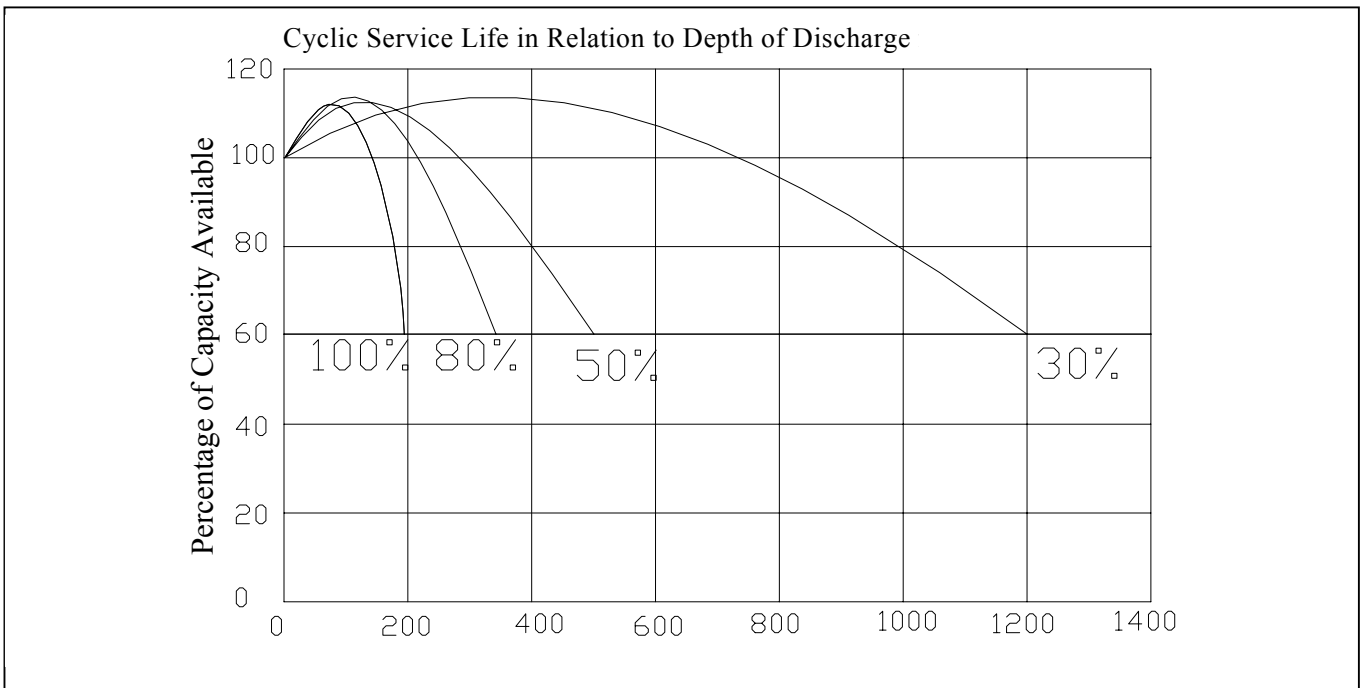
■ SELF-DISCHARGE CHARACTERISTICS



■ SELF-DISCHARGE CHARACTERISTICS



■ CYCLE SERVICE LIFE(25°C/77°F)



2M-12100 12V-100AH Gel Constant Power Discharge Data

Time F.V.	Autonomy in minutes										Autonomy in hours						
	3	5	10	15	20	25	30	35	40	45	1	2	3	5	8	10	20
1.60	813	543	388	308	255	220	195	178	163	148	120	73	53	35.0	24.0	18.8	10.1
1.65	793	536	382	303	252	217	193	176	162	146	119	72	52	34.6	23.8	18.6	10.1
1.70	768	516	374	296	248	213	188	171	160	143	118	71	51	34.2	23.4	18.2	10.1
1.75	726	491	363	283	239	205	183	165	156	139	115	69	50	33.5	22.6	17.9	10.0
1.80	675	450	340	255	228	196	175	158	147	133	108	65	48	32.5	22.0	17.5	10.0

BATTERY/2000 is a trade mark of All Power Battery